

F 689  
.T6 T6  
Copy 1

TOPEKA  
1911  
ILLUSTRATED



A CAPITAL  
CITY



# TOPEKA

"

KANSAS

## A CAPITAL CITY *ILLUSTRATED*

1911

*Embracing the Banks and Financial  
Institutions, Manufacturing and  
Jobbing Interests, Public and  
Commercial Buildings, and  
All Places of Interest in  
and about the City.*



PRICE ONE DOLLAR

  
COPYRIGHT APPLIED FOR BY  
A. OWEN JENNINGS

F 0 8 1 2  
- 1 6 -

## INTRODUCTORY



**I**N presenting you with this book it is not alone as a souvenir, but to show you by actual illustrations what Topeka is, and what she has to offer to the home-seeker, investor, merchant or manufacturer, and that she is a Capital City indeed. All of the views and engravings were made especially for this book, and it is with no little feeling of pride that we present it to you, believing that it represents the highest standard of the photographer's, engraver's and printer's art.

Yours very truly,

A. OWEN JENNINGS

PUBLISHER

*319 Boonville Street, Springfield, Mo.*

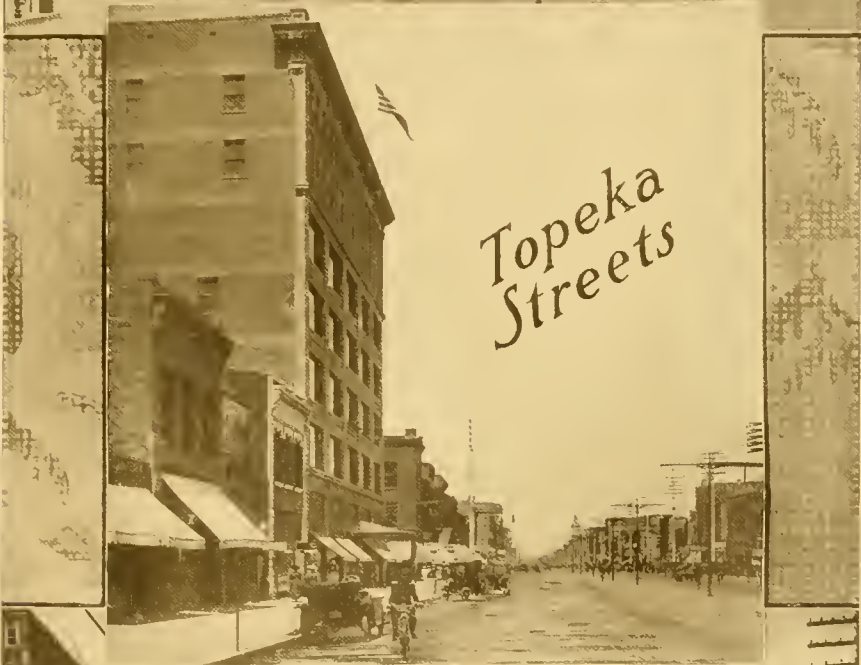
Press of  
The Adams Brothers Co.



Engravings by  
Topeka Engraving Co.

TRANSFER  
COPYRIGHT OF 1912  
MAY 1 1912

2000-10-11-12



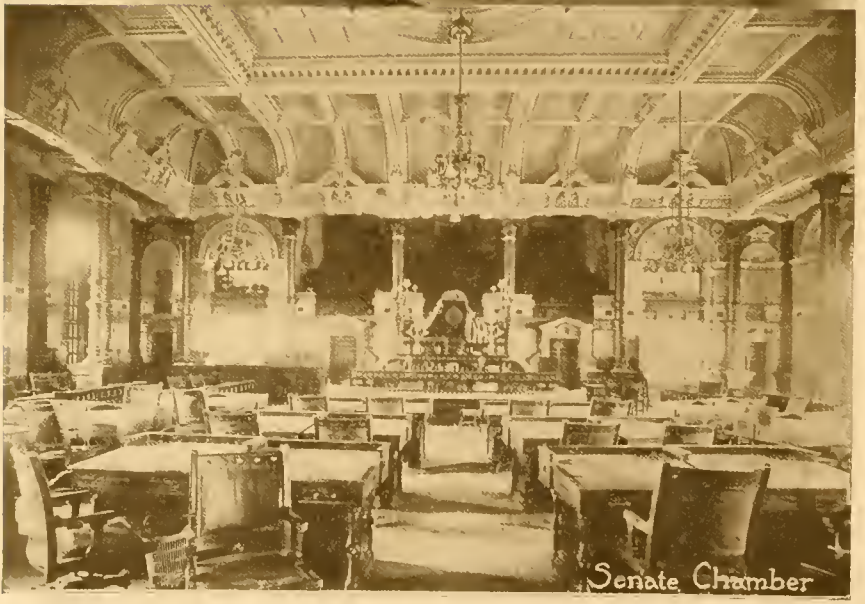




Supreme Court



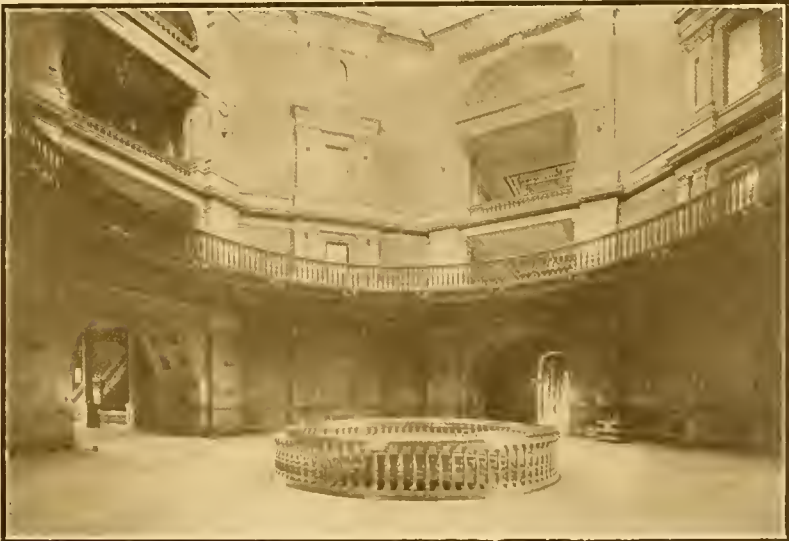
House of Representatives



Senate Chamber



KANSAS STATE HOUSE





Provident Assn



Insane Asylum



Topeka vs Lincoln



Melan Arc Bridge





Governors Mansion



Bethany College



G.A.R. Memorial Building



Water Works



County Jail



State Printer





Shawnee  
County  
Court  
House



Federal  
Building



Auditorium and City Hall





NEW ENGLAND BUILDING  
MERCHANTS NATIONAL BANK





Public  
Library



Ingleside



Y.W.C.A.



Y.M.C.A.



Columbian Bldg.



Bank of Topeka



Crawford  
Bldg.





F.O.E.



COUNTRY CLUB



TOPEKA CLUB



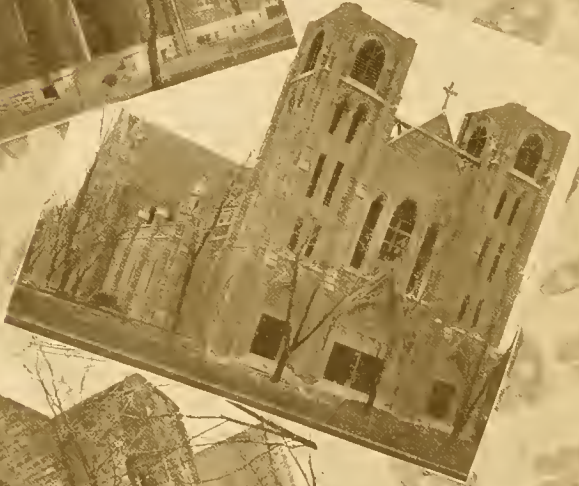
B.P.O.E.



Second United  
Presbyterian.



First United  
Presbyterian



Grace Cathedral  
(Episcopal)



First Christian

# CHURCHES

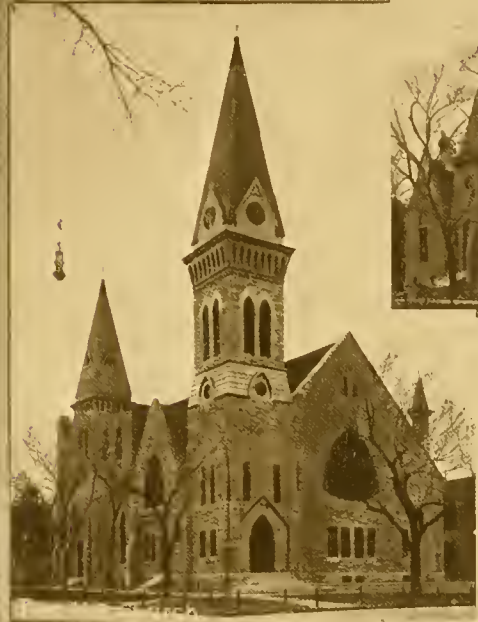


Central Congregational

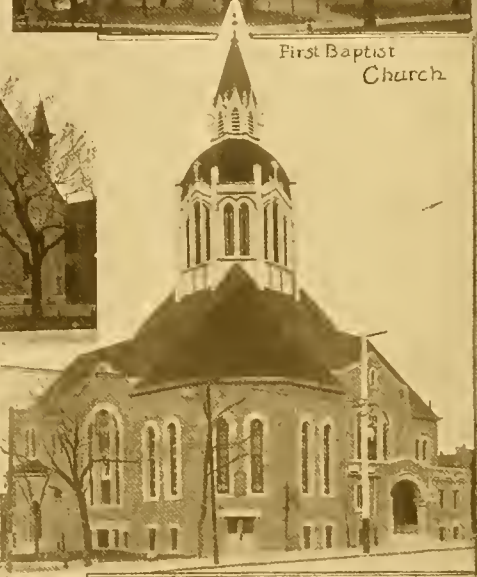




First Congregational Church



First Baptist Church



English Lutheran Church



First Presbyterian Church











Holbrook Hall



Office



Medical  
and  
Dental

WASHBURN  
COLLEGE



President's Res.



Thomas Gymnasium

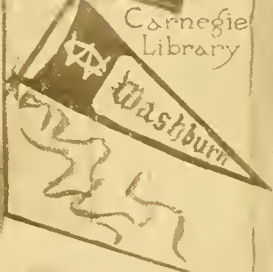




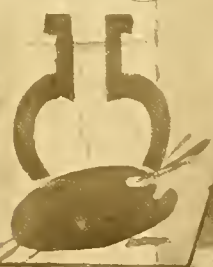
MacVear  
Chapel



Carnegie  
Library



Observatory



Boswell  
Hall



Rice Hall

WASHBURN  
COLLEGE

PUBLIC  
SCHOOLS



Polk



Summer



Harrison



New Quincy







PUBLIC  
SCHOOLS

Woman



Central Park

Pottery



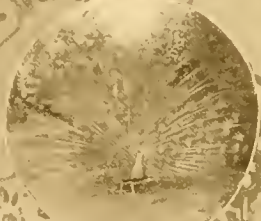
High



Manual  
Training



CENTRAL  
PARK



GAGE  
PARK





Christ



Stormont



St. Francis

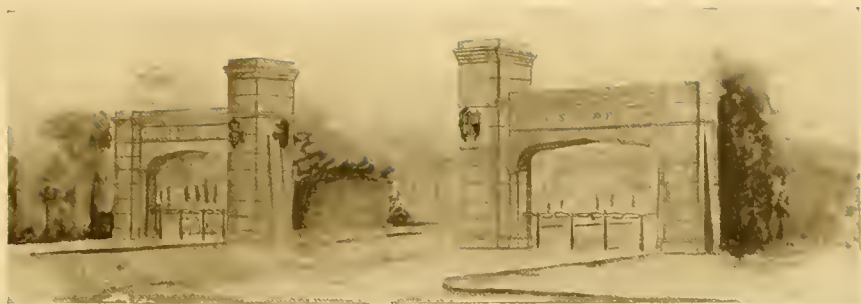


Santa Fe

HOSPITALS



**TOPEKA  
FIRE  
DEPARTMENT**



ENTRANCE



HORSE PAVILION



SWINE BARN.



LIVE STOCK PAVILION



ART AND MERCANTILE BUILDING  
KANSAS STATE FAIR ASSOCIATION





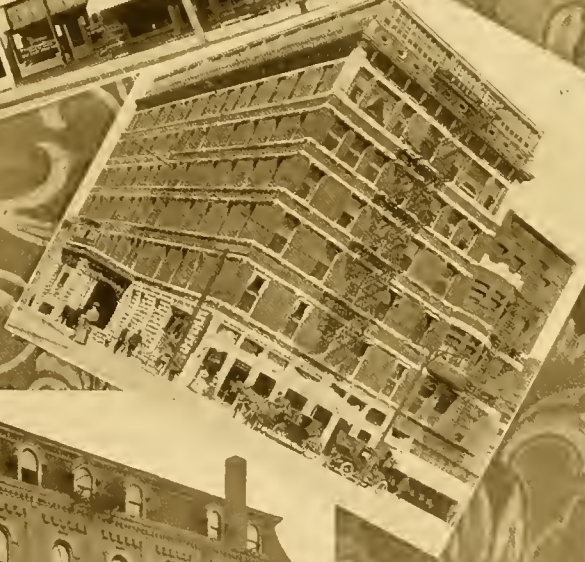
NEW THROOP HOTEL.





Glenwood

National



HOTELS





THE MILLS BUILDING.





ETNA  
BLDG.



The State  
Savings  
Bank



Santa Fe  
Office  
Bldgs





INTERIOR CENTRAL NATIONAL BANK.



CENTRAL NATIONAL BANK.



Topeka  
Edison  
Light  
Co.










Main Floor  
Manufacturing  
Dept



Shipping Room 

Cooking  
Department



Olive & Pickle  
Packing



Products

THE HOME  
OF THE



Packing  
Room

Office





MILLER. WALL PAPER—THAT'S ALL.



MAIN FLOOR FURNITURE DEPARTMENT CROSBY BROS. CO.



TOPEKA STEAM BOILER WORKS.











This Entire Building Owned and Occupied by  
Continental Creamery Co.

*THE HOME OF "MEADOW GOLD."*











E.E. Ames



Thomas Page



F.W. Watson



D.J. Hathaway



Arquib Foster





W. T. Crosby



E. H. Crosby





C.W. Merriam



I.L. Betzer



H.A. Auerbach



J.B. Betts



A.A. Godard



J.C. Emahizer



Wm Macferran



Otto Kuehne



Chas. Wolff



W.H. Davis



# TOPEKA

## KANSAS

### *Municipal Information*

Population, 50,000.

- 2 Daily Newspapers; Combined circulation 55,000.
- 36 Other Regular Publications; Circulation 1,600,000.
- 72 Churches, 3 Y. M. C. A. Buildings, 1 Y. W. C. A. Building.
- 26 Public Schools, 225 Teachers, 6,700 Pupils.  
Washburn College and Bethany College (1,200 Students), 6 Business Colleges.
- 6 Hospitals; annual revenue \$1,000,000.
- 9 Public Parks.
- 68 Miles of Paving; 355 Miles of Brick and Cement Sidewalks.
- 110 Miles of Sewerage System.
- 70 Miles of Water Mains. City owns Water Plant.
- 49 Miles of Electric Street Railway. 7 Miles Suburban.
- 4 Lines of Steam Railway. 60 Passenger Trains Daily.
- 9 Banks with Capital and Surplus of \$1,300,000.
- 3 Building and Loan Associations. Assets \$4,500,000.
- 29 Wholesale and Jobbing Houses, 376 Manufacturing Plants. Annual Business of Over \$22,000,000.
- 6 Flouring Mills. Daily Capacity 3,600 Barrels.  
Topeka has the Largest Creamery in the World. Manufactures 8,000,000 Pounds of Butter, and Ships 50,000,000 Eggs Annually.  
Topeka has the Largest Railway Repair Shops in the World, 4,500 Employees.  
Topeka has the Largest Auditorium in the State, Seating 4,200; contains \$18,000 Pipe Organ.
- 110 Miles of Natural Gas Mains (10 and 25 cents per 1,000 feet).  
Telephones, 10,000.

Topeka has an ideal climate. Altitude, 1,000 feet. Maximum temperature, 102 degrees; Minimum, 8 degrees. Mean temperature during the summer months, 74 degrees; winter months, 30 degrees. Precipitation, 35 inches. Sunshine 278 days in the year.

Comparison of taxes levied for city purposes only, based on 1911 levy, per \$1,000 of valuation:

TOPEKA	\$6.30	Minneapolis	\$7.23
Denver	12.84	St. Paul	7.20
St. Louis	9.58	Rochester	15.74
Pittsburg	13.80	Toledo	9.97
Boston	12.81	Omaha	8.46
Cleveland	8.04	Scranton, Pa.	12.70
Cincinnati	8.01	Atlanta	7.35
Kansas City, Mo.	6.20	New Haven	14.75
Milwaukee	7.26	Nashville	10.00
Seattle	7.40		

## PATRONS OF THIS PUBLICATION

---

### MANUFACTURERS AND JOBBERS.

W. O. ANDERSON & CO., Wholesale Produce, etc. 206-208 Kansas Ave.  
 CAPITAL SHIRT FACTORY. 624 Kansas Ave.  
 CONTINENTAL CREAMERY. 200-218 Polk St.  
 CROSBY ROLLER MILLING CO. Cor. Tenth and Washington.  
 DAVIS MERCANTILE CO., Wholesale Grocers. 101-107 N. Kansas Ave.  
 CHAS. S. EAGLE, Cigar Manufacturer. 729 Kansas Ave.; 708-710 Jackson St.  
 JENSEN MANUFACTURING CO. 700 E. Eighth St.  
 KAW MILLING CO. Cor. Monroe and Curtis.  
 OTTO KUEHNE PRESERVING CO. N. Topeka Ave. and Curtis St.  
 THOMAS PAGE, Mid-Continent Mills. Cor. Norris and Quincy.  
 SHAWNEE MILLS. 235 Kansas Ave.  
 W. A. L. THOMPSON HARDWARE CO. 511-513 Kansas Ave.; 506-510 Jackson St.  
 TOPEKA ICE AND FUEL CO. Cor. First and Jackson.  
 TOPEKA MILLING CO. Cor. Crane and Adams.  
 TOPEKA STEAM BOILER WORKS. Joseph Bromich, Prop'r. 113-129 Jefferson.  
 WESTERN FOUNDRY AND MACHINE WORKS. Cor. Second and Jefferson.  
 WHITEKER BROS., Wholesale Produce. 100-102 N. Kansas Ave.  
 CHAS. WOLFF PACKING CO. Foot of Quincy.

### RETAIL INTERESTS.

THE CROSBY BROS. CO. 717-719 Kansas Ave.; 712-716 Jackson St.  
 EMAHIZER & SPIELMAN FURNITURE CO. 519 Kansas Ave.  
 HALL STATIONERY CO. R. F. Moore, Mgr. 623 Kansas Ave.  
 C. R. MILLER, Wall Paper. 114 W. Eighth Ave.  
 MILLS DRY GOODS CO. Mills Building, cor. Ninth and Kansas Ave.  
 R. F. MOORE, Mgr. Hall Stationery Co. 623 Kansas Ave.  
 PALACE CLOTHING CO. 709-711 Kansas Ave.  
 SHAPIRO & ENGLISH, "The Outlook," Ladies' Cloaks and Suits, 733 Kansas Ave.

### REAL ESTATE, LOANS, INSURANCE, ETC.

I. L. BETZER, Real Estate. Room A, New England Building.  
 JNO. F. CARTER, Loans. Aetna Building.  
 J. F. CASEBEER, Real Estate. 601-2 New England Building.  
 HOME REAL ESTATE EXCHANGE.  
 C. A. MOORE, Life Insurance. Central National Bank.  
 GEO. M. NOBLE & CO., Real Estate and Insurance. 435 Kansas Ave.

PIONEER MORTGAGE CO. Farm Mortgages. Mulvane Building.

JNO. Q. ROYCE, Loans. Aetna Building.

STANDARD LAND CO., Real Estate. 435 Kansas Ave.

THE STRAUSS AGENCY, Real Estate. 106½ West Fifth.

B. H. TALLMADGE, Pueblo-Rocky Ford Land Co. 315 New England Building.

R. L. TINKER, Real Estate. 322 New England Building.

C. B. WINGETT, Real Estate. 109 West Sixth.

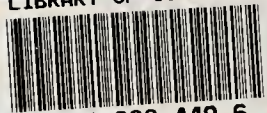
### MISCELLANEOUS.

E. E. AMES, Vice-President Central National Bank. 700 Kansas Ave.  
 ARNBERG & BLOOM, Tailors. 525 New England Building.  
 L. G. BEAL. 422 New England Building.  
 ARTHUR J. BOLINGER, Lawyer. 501 Jackson.  
 W. F. BOWEN, Physician. 801 Western Ave.  
 A. W. BRONSON. Central National Bank.  
 J. R. BURROW, President Central National Bank. 700 Kansas Ave.  
 CENTRAL NATIONAL BANK. 700 Kansas Ave.  
 F. W. FREEMAN, Vice President Merchants National Bank. 501 Kansas Ave.  
 A. A. GODARD, Lawyer. Shawnee Fire Building.  
 SETH A. HAMMEL, Physician. 811 Kansas Ave.  
 D. J. HATHAWAY, Manager J. Thomas Lumber Co. 721 N. Kansas Ave.  
 EDWIN HINKEL. 407 and 408 Mulvane Building.  
 INDEPENDENT TELEPHONE CO. 812-814 Jackson.  
 JOLLEY & BLANCHARD, Grain Dealers. 401 New England Building.  
 WM. MACFERRAN, President The State Savings Bank. 601 Kansas Ave.  
 TOPEKA PANTATORIUM. 115 W. Seventh.  
 PERKINS FASHION STABLES. 112-114 W. Fifth.  
 JNO. H. RINEHART, Physician. 612-614 Kansas Ave.  
 FRANK C. SQUIRES, Architect. 628 Kansas Ave.  
 A. A. ROBINSON. 900 Tyler.  
 STATE SAVINGS BANK. 601 Kansas Ave.  
 THROOP HOTEL. Cor. Fourth and Kansas Ave.  
 WASHBURN COLLEGE. Cor. Euclid and College.  
 F. W. WATSON, Nurseryman. 401 N. Topeka Ave.  
 J. W. WRIGHT, City Treasurer. City Hall.





LIBRARY OF CONGRESS



0 016 088 449 6